

## Near Bit Azimuth GR Tool

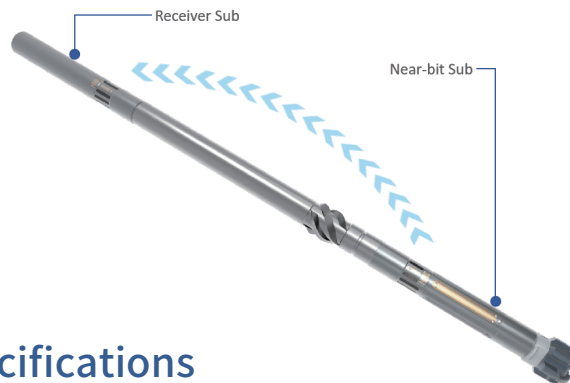
CatLiD®

## CatLiD® Near Bit Azimuth GR Tool

This product is designed for precise drilling geological guidance, with real-time dynamic circumferential 16-sector azimuth gamma imaging accurate measurement, continuous well deviation monitoring, real-time high speed electromagnetic wireless transmission and other functions, can guide the bit to move in the reservoir in realtime, correct the drilling trajectory, improve the reservoir drilling rate, drilling efficiency and quality.

### Features

- Measurement distance to bit is 0.37m
- 16-sector azimuth gamma imaging
- Low battery consumption: Over 320h service time in 1 run for near-bit sub
- LWD compatibility: Can be used with LWD such as EM Resistivity Tool in one BHA



### Mechanical Specifications

Nominal Size	6.75"	4.75"	6"
Collar OD (in / mm)	6.75/171.5	4.75/121	6.0/155
Max. Collar OD (in / mm)	7.0/178	5.3/135	6.3/160
Near-Bit Sub Length (m)	1.05m	1.05m	1.05m
Receiver Sub Length (m)	1.17-1.23m	1.78m	1.23m
Near-Bit Sub Connection	4 ½ REG	3 ½ REG	4 ½ REG
Receiver Sub Connection	4 ½ IF/NC50	3 ½ IF/NC38	NC46

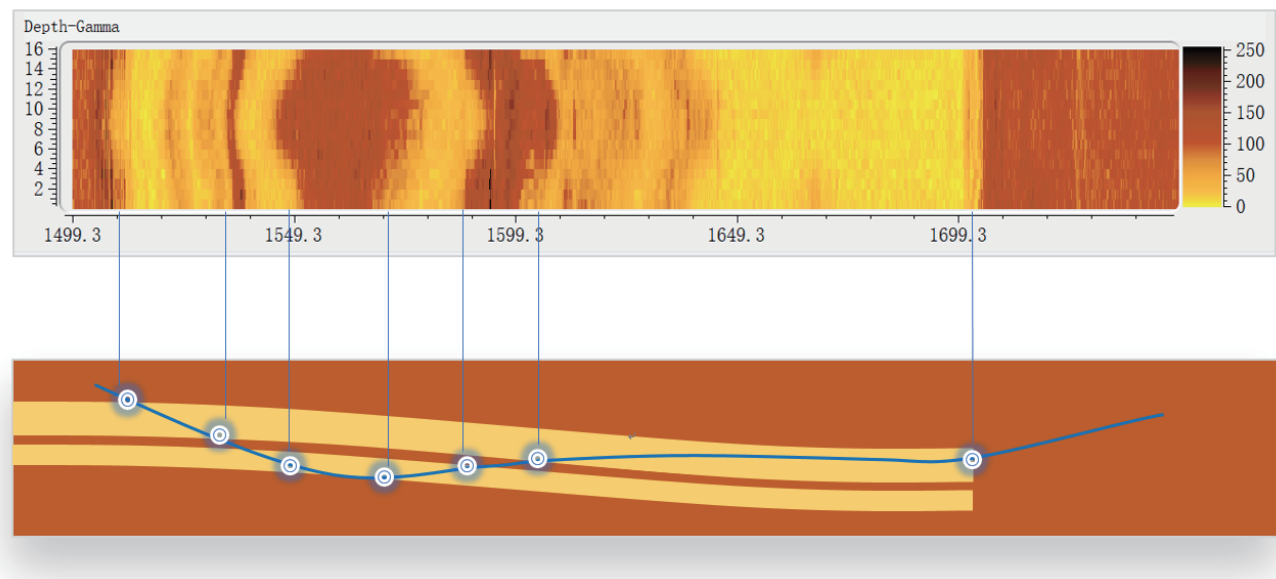
### Operating Specifications

Max. Pressure	20000psi [137.90MPa]	Max. Temp.	175°C
Vibration	20 Grms, 50-1000 Hz	Shock	500 g, 0.5 ms, Z-axis; 1000 g, 0.5 ms, Y/X-axis

## Measurement Specifications

Parameters	Range	Accuracy	Resolution
16-Sector Azimuthal GR	0-1000API	5%	6.0 inch [15cm] in vertical
At-Bit Inclination	0-180°	±0.5°	NA
Status Parameters	3-axis vibration, collar speed, power supply, temperature, etc.		
Sample Rate	16s	Memory size	256MB

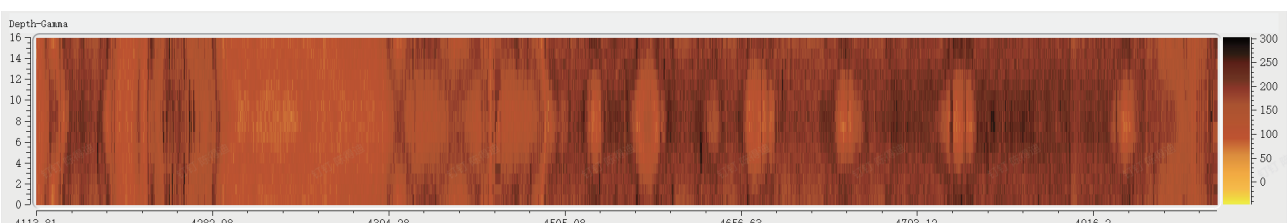
## Field case: 16-sector azimuthal GR image



## Azimuth gamma curve



## 16-sector gamma imaging



## FELiD® SYSTEM

---



**TigerLiD**  
MWD Tool



**CatLiD**  
Near Bit Tool



**JaguarLiD**  
RSS



**LeoLiD**  
Resistivity Tool



**PumaLiD**  
NMR Logging Tool



**LynxLiD**  
Gamma Tool